



*Changing Lives,  
Creating Futures*

## LCTCS FACILITIES CORPORATION

---

To: The Honorable Cameron Henry, Chairman of the Joint Legislative  
Committee on the Budget  
  
Honorable Members of the Joint Legislative Committee on the Budget

From: Stephen C. Smith, Chair of LCTCS Facilities Corporation Board

Date: April 26, 2019

Subject: Report by the LCTCS Facilities Corporation pursuant to Act 511 of the 2016  
Regular Legislative Session

I am pleased to provide you with the enclosed copy of the LCTCS Facilities Corporation 2018 Annual Report.

The report was prepared pursuant to Section 1 of Act 511 of the 2016 Regular Legislative Session that requires the LCTCS Facilities Corporation to submit an annual report to the Joint Legislative Committee on the Budget by April thirtieth in the calendar year following the 2018 calendar year that is the subject of the report. The report includes the project status, project funds expended, and contractor information for the facilities and improvements undertaken by the LCTCS Facilities Corporation in 2018.

If you have questions regarding the report or LCTCS Facilities Corporation projects, please contact me at [ssmith@ascellc.com](mailto:ssmith@ascellc.com) or (985)-852-3445.

Sincerely,

Stephen C. Smith  
LCTCS Facilities Corporation Board  
Chair

---

LCTCS Facilities Corporation Board of Directors

Stephen C. Smith, Chair • Senator Lambert Boissiere, Secretary/Treasurer  
Representative Billy Montgomery • Judge U. Gene Thibodeaux



# LCTCS FACILITIES CORPORATION 2018 ANNUAL REPORT

ACT 391 | ACT 360

*ANNUAL REPORT PREPARED BY*

**CSRS**

**UNITED**  
PROFESSIONALS COMPANY

## EXECUTIVE SUMMARY

The LCTCS Facilities Corporation is a 501(c)(3) private non-profit corporation formed in 2008 for administration, oversight, and management of the Act 391 and Act 360 statewide facilities improvement program for the benefit of Louisiana's Community and Technical Colleges (LCTCS) students. The Corporation's board of directors consists of civic leaders from geographic areas across the state, that volunteer their time to represent the interest of LCTCS, its colleges, and the State of Louisiana. CSRS, Inc. was hired by the Corporation as their Program Manager to administer design and construction. CSRS has worked as a team with the LCTCS and the Facilities Corporation over the past eleven (11) years delivering on the promises made in Act 391. At the time, the Act 391 program represented a departure from traditional financing and followed the model first conceived for projects in Bossier City, Baton Rouge and Lafayette. There have been great accomplishments made during the delivery of the Program and the Corporation has fundamentally reshaped the way capital improvements are accomplished for the LCTCS. Key to the Program's success has been collaboration with Facility Planning & Control (FP&C) and the State Board of Regents.

### OVER THE PAST ELEVEN YEARS, THE PROGRAM HAS HELPED TO:

**CHANGE** the perception of what a technical and community college should look like and how the facilities can make a difference in the delivery of education

**MANAGE** the largest capital improvements plan in LCTCS history and the first major program utilizing alternative financing and project delivery methods

**ESTABLISH** public trust in the stewardship of alternative financing, which led to the authorization of funding for the Act 360 Facilities Improvement Program

**DEVELOP** standard LCTCS processes and procedures that can be used for current and future capital improvements projects and programs throughout the system

**FOSTER** a culture of diversity and local participation in the delivery of management, design and construction services across the state

**CREATE** energy efficient facilities to replace outdated structures that are far less efficient and have a negative financial impact for the LCTCS

Louisiana is experiencing substantial economic growth and investment from both business and industry. With these new investments, highly-skilled and a ready-to-go workforce to fill the jobs these new businesses are bringing to the state is essential. In this dynamic environment, the role of Louisiana's community and technical colleges in developing and sustaining this workforce is more important than it has ever been. The LCTCS facilities program is targeted to specific workforce needs in high demand industries, including construction, welding, process technology, nursing, and a variety of skills for the oil and gas industry, and is a prudent investment for the State to support the expanding business and economic growth.

The overwhelming support for Act 391 and Act 360 from legislators from across the state reflects the desire of the citizens of Louisiana to properly educate and develop a sufficient workforce for future economic growth. What better way to reflect that support than to put Louisiana citizens to work on the very program providing the facilities for education? The Program has worked to ensure that Louisiana firms and disadvantaged business enterprises throughout the state are awarded work in every facet of this program.

### **ACT 391 FACILITIES IMPROVEMENT PROGRAM** *Making a Change for Tomorrow's Educational Facilities*

**Act 391** was authorized during the 2007 Legislative Session in Senate Bill 337 for 23 projects at 14 community and technical colleges totaling \$175 million across the state. In October 2009, nine (9) of the 23 projects were identified for the first phase of bond projects and officially closed out.

The Program is currently closing out the remaining Act 391 funds with small projects, including maintenance projects, identified by the Campus for Nunez Community College in Chalmette.



## **ACT 360 FACILITIES IMPROVEMENT PROGRAM**

*Providing increased training capacity and opportunities for students, business, and industry in both rural and urban areas across the state*

Senate Bill 204 was signed into law by Gov. Jindal in 2013, which authorized **Act 360** financing in the amount of \$285.9 million for 29 projects statewide which includes 25 workforce projects, 3 one stop student testing, career and service centers, and one safety related project. Act 360 requires a combination of state bond financing and 12% private match (Land, Equipment, or Cash Donation). The Program has received private matches from community leaders and private industry. Act 360 Phase I bonds were sold in December 2014.

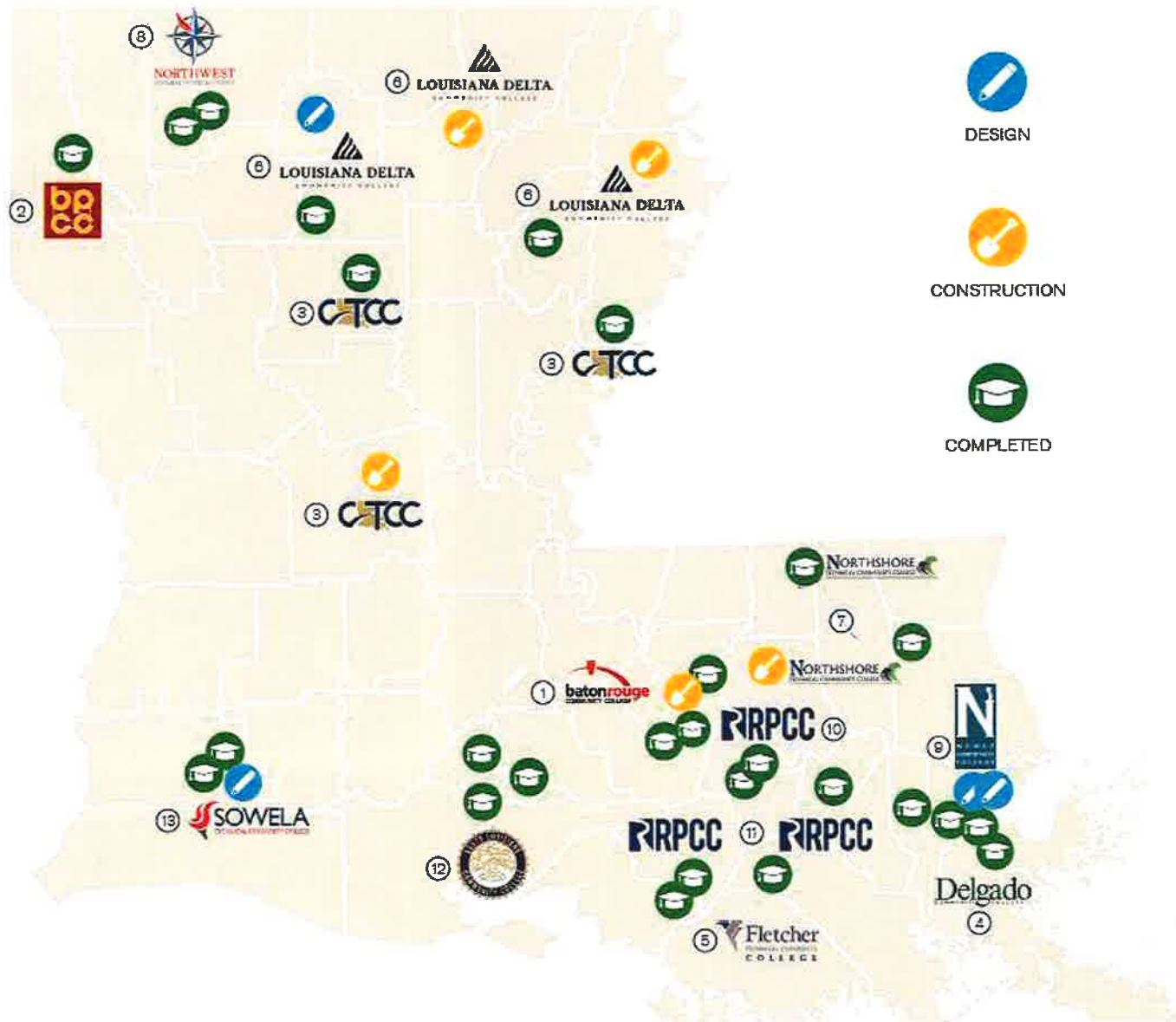
The Program includes 13 rural campus projects, which represent 45 percent of the 29 projects, from the communities of Lacombe, Winnsboro, Jonesboro, Jennings, Minden, Schriever, Ruston, Livingston Parish, Reserve, Morgan City, Avondale and Tallulah. The remaining 16 projects are in urban areas, including Alexandria, Monroe, Bossier City, Gonzales, Lafayette, Lake Charles, Baton Rouge, New Orleans, Chalmette, and Jefferson Parish.

The Program currently has one (1) Phase I project in construction, four (4) Phase II projects in construction, and five (5) Phase III projects in design.

CSRS, Inc.



Brian Budd  
Program Director





LCTCS ACT 360

COMPLETED PROJECTS

LCTCS FACILITIES CORPORATION



## BATON ROUGE COMMUNITY COLLEGE AUTOMOTIVE COLLISION CENTER

<b>TOTAL PROJECT FUNDING:</b>	\$8,700,000
<b>EXPENDITURES AS OF 2018:</b>	\$7,772,630.67
<b>COMPLETION DATE:</b>	May 14, 2018
<b>BUILDING SIZE:</b>	New Building – 25,924 sq. ft.
<b>ARCHITECT:</b>	BCB Architects, LLC
<b>CONTRACTOR:</b>	Ratcliff Construction Company, LLC

### PROJECT INFORMATION

The Automotive Collision Center is located 2115 N. Lobdell Dr., Baton Rouge, LA 70806. The new facility is part of a forthcoming mixed-use development, which also includes a residential neighborhood, retail establishments and a high school career academy. The building includes academic classrooms and teaching spaces, faculty and administrative offices, training labs, and automotive shops.

\*The Contractor satisfactory completed the facility in accordance with the contract documents.

### VENDORS AND CONSULTANTS

### CONTRACT AMOUNTS

### DESCRIPTION

BCB Architects, LLC	\$	511,416.94	Design Fees
Baton Rouge Community College	\$	4,679.38	Reimbursement for FF&E and Misc. Expenses
Breazeale, Sachse, & Wilson	\$	19,581.77	Owner's & Lender's Title Insurance
Cajun Electric, LLC	\$	14,570.30	Furniture, Fixtures, and Equipment
Capital Paint & Supply, Inc.	\$	8,204.00	Furniture, Fixtures, and Equipment
CDW Government	\$	35,208.57	Furniture, Fixtures, and Equipment
Collision Services Inc.	\$	27,318.40	Furniture, Fixtures, and Equipment
Contract Furniture Group	\$	92,661.57	Furniture, Fixtures, and Equipment
Convergent Technologies	\$	23,650.23	Furniture, Fixtures, and Equipment
CSRS, Inc.	\$	209.14	Reimbursables
Custom Equipment Company	\$	6,715.00	Furniture, Fixtures, and Equipment
Domain Architecture, APAC	\$	23,940.00	Bridging Architect
EIM Services LLC	\$	179,377.58	Furniture, Fixtures, and Equipment
Fenstermaker	\$	4,000.00	Geotechnical Services
Gas and Supply	\$	244,575.03	Furniture, Fixtures, and Equipment
Howard Technology	\$	16,733.00	Furniture, Fixtures, and Equipment
Hunter Engineering Company	\$	30,613.53	Furniture, Fixtures, and Equipment



VENDORS AND CONSULTANTS	CONTRACT AMOUNTS	DESCRIPTION
Interstate Electronic Systems	\$ 99,909.02	Furniture, Fixtures, and Equipment
Jones Walker	\$ 3,540.30	Bond Work & Project Match Certification
LandSource, Inc.	\$ 6,990.50	Surveying Services
LATECH Security and Surveillance	\$ 9,998.00	Furniture, Fixtures, and Equipment
Louisiana Community & Technical College System	\$ 6,710.20	Reimbursable for Legal Fees
MMLJ, Inc.	\$ 44,150.00	Furniture, Fixtures, and Equipment
OpenEyes Training Technology and Consulting	\$ 15,400.00	Furniture, Fixtures, and Equipment
Ratcliff Construction Co., LLC	\$ 6,518,674.73	Construction Contract
Scott Equipment Co. LLC	\$ 24,347.83	Furniture, Fixtures, and Equipment
SHI International Corp.	\$ 21,336.00	Furniture, Fixtures, and Equipment
SnapOn Industrial	\$ 70,719.62	Furniture, Fixtures, and Equipment
Transformyx	\$ 133,800.96	Furniture, Fixtures, and Equipment



## DELGADO COMMUNITY COLLEGE RIVER CITY CAMPUS

<b>TOTAL PROJECT FUNDING:</b>	\$24,000,000
<b>EXPENDITURES AS OF 2018:</b>	\$23,028,567.74
<b>COMPLETION DATE:</b>	July 12, 2018
<b>BUILDING SIZE:</b>	New Building – 74,638 sq. ft.
<b>ARCHITECT:</b>	Woodward Design + Build
<b>CONTRACTOR:</b>	Woodward Design + Build

### PROJECT INFORMATION

The River City Campus is located at 700 Churchill Pkwy, Avondale, LA 70094. The facility includes academic classrooms, computer labs, media center, testing center, multi-purpose rooms, student lounge, shop spaces, faculty and administrative offices, conference rooms, administrative and student services spaces, and general use areas.

\*The Contractor satisfactory completed the facility in accordance with the contract documents.

### VENDORS AND CONSULTANTS

### CONTRACT AMOUNTS

### DESCRIPTION

VENDORS AND CONSULTANTS	CONTRACT AMOUNTS	DESCRIPTION
A&M Container	\$ 7,240.00	Furniture, Fixtures, & Equipment
A/C Electric	\$ 48,400.00	Furniture, Fixtures, & Equipment
Benecom Technologies	\$ 10,816.00	Furniture, Fixtures, & Equipment
Breazeale, Sachse, & Wilson	\$ 34,629.96	Owner's and Lender's Title Insurance
CDW Government	\$ 2,905.00	Furniture, Fixtures, & Equipment
COM-NET	\$ 239,801.37	Furniture, Fixtures, & Equipment
Computer Comforts, Inc.	\$ 12,102.30	Furniture, Fixtures, & Equipment
Contract Furniture Group	\$ 1,521.27	Furniture, Fixtures, & Equipment
Converge One	\$ 73,453.00	Furniture, Fixtures, & Equipment
CSRS, Inc.	\$ 265.10	Reimbursables
Delgado Community College	\$ 9,076.72	Reimbursement for FF&E and Misc. Expenses
DELL USA L.P.	\$ 31,468.37	Furniture, Fixtures, & Equipment
Eustis Engineering Services	\$ 900.00	Geotechnical Services
FASTSIGNS of Metairie- Lakeside	\$ 918.40	Furniture, Fixtures, & Equipment
GMC Cable	\$ 202.83	Furniture, Fixtures, & Equipment
Graybar	\$ 5,717.20	Furniture, Fixtures, & Equipment
Hertz Furniture	\$ 1,805.00	Furniture, Fixtures, & Equipment
Holly & Smith Architects, APAC	\$ 278,151.25	Bridging Architect

VENDORS AND CONSULTANTS	CONTRACT AMOUNTS	DESCRIPTION
Holly & Smith Architects, APAC	\$ 12,512.50	Reimbursable for Geotechnical Services
HON Company	\$ 372,466.31	Furniture, Fixtures, & Equipment
HP Public Sector	\$ 4,009.85	Furniture, Fixtures, & Equipment
iConvergence, Inc.	\$ 19,349.50	Furniture, Fixtures, & Equipment
ICT, Inc.	\$ 22,645.00	Furniture, Fixtures, & Equipment
Interstate Electronic Systems	\$ 257,569.33	Furniture, Fixtures, & Equipment
JEDCO	\$ 24,995.24	Traffic Analysis Study Reimbursement
Jones Walker	\$ 7,080.60	Bond Work & Project Match Certification
Land & Sea	\$ 58,727.00	Furniture, Fixtures, & Equipment
Letterman's Blue Print & Supply	\$ 1,732.95	Signage
*Funds Held in Escrow for Land Expenses	\$ 510,714.00	Escrow for JEDCO Land
Louisiana School Equipment Company, LLC	\$ 164,133.56	Furniture, Fixtures, & Equipment
Mainline Information Systems	\$ 157,643.21	Furniture, Fixtures, & Equipment
NOVA Solutions, Inc.	\$ 29,693.16	Furniture, Fixtures, & Equipment
Pharos Systems International, Inc.	\$ 743.75	Furniture, Fixtures, & Equipment
PSI	\$ 3,300.00	Environmental Services
R.W. Krebs, LLC	\$ 4,800.00	Surveying Services
Reed Industrial Systems, Inc.	\$ 75,271.00	Furniture, Fixtures, & Equipment
Siemens	\$ 9,490.00	Furniture, Fixtures, & Equipment
Southern Abstracts, Inc	\$ 883.00	Abstract Services
Spacesaver	\$ 9,792.40	Furniture, Fixtures, & Equipment
Universal Data Incorporated	\$ 4,431.50	Furniture, Fixtures, & Equipment
VFP Fire Systems	\$ 70,473.12	Furniture, Fixtures, & Equipment
VIRCO	\$ 7,031.64	Furniture, Fixtures, & Equipment
Window Film Depot	\$ 4,950.00	Furniture, Fixtures, & Equipment
Woodward Design Build	\$ 20,992,110.22	Design Build Contract
Workplace Solutions	\$ 17,724.43	Furniture, Fixtures, & Equipment



## BOSSIER PARISH COMMUNITY COLLEGE 4TH FLOOR BUILDOUT

<b>TOTAL PROJECT FUNDING:</b>	\$2,200,000
<b>EXPENDITURES AS OF 2018:</b>	\$2,020,644.36
<b>COMPLETION DATE:</b>	July 30, 2018
<b>BUILDING SIZE:</b>	New Building – 16,980 sq. ft.
<b>ARCHITECT:</b>	Mike McSwain Architect (LA TECH)
<b>CONTRACTOR:</b>	Brown Builders, Inc.

### PROJECT INFORMATION

The project is a collaboration for Louisiana Tech University Foundation, Cyber Innovation Center, Bossier Parish Community College, and managed by the LCTCS Facilities Corporation. The project consisted of the the build-out of 16,980 sq. ft. of existing open, unfinished shell space in the BPCC STEM Building and includes offices, Veterans Resource Center, conference rooms, computer lab, study areas, and general classrooms.

\*The Contractor satisfactory completed the facility in accordance with the contract documents.

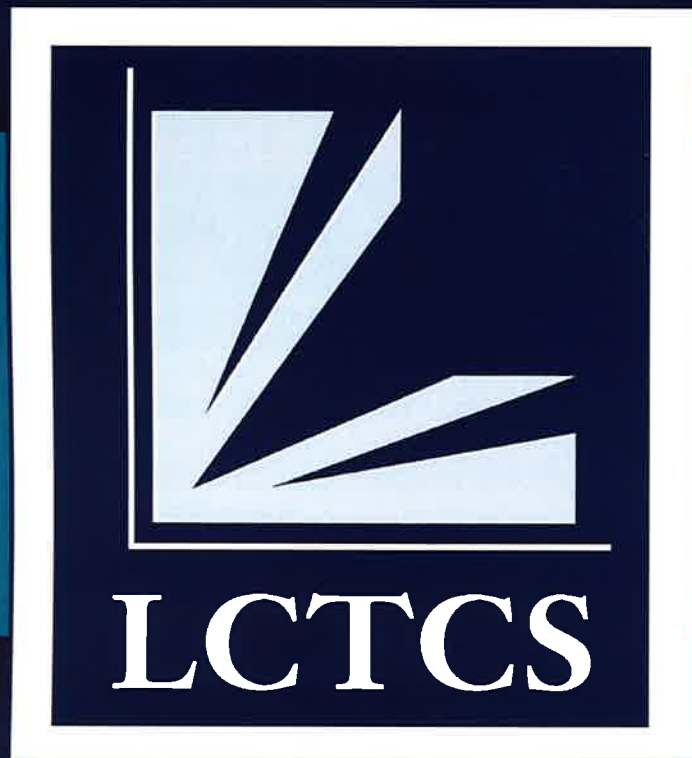
### VENDORS AND CONSULTANTS

### CONTRACT AMOUNTS

### DESCRIPTION

VENDORS AND CONSULTANTS	CONTRACT AMOUNTS	DESCRIPTION
Breazele, Sachse, & Wilson	\$ 4,492.47	Owner's & Lender's Title Insurance
Brown Builders, Inc.	\$ 1,444,590.39	Construction Contract
CSRS, Inc.	\$ 861.89	Reimbursables
Dell Marketing L.P.	\$ 15,628.26	Furniture, Fixtures, & Equipment
Howard Technologies Solutions	\$ 417,210.00	Furniture, Fixtures, & Equipment
Jones Walker	\$ 1,749.20	Bond Work & Project Match Certification
M.L. Bath Company LTD., Inc.	\$ 9,185.00	Furniture, Fixtures, & Equipment
Postlethwaite & Netterville	\$ 25,165.01	Furniture, Fixtures, & Equipment
The HON Company	\$ 134,834.65	Furniture, Fixtures, & Equipment





LCTCS ACT 360

CONSTRUCTION PROJECTS

LCTCS FACILITIES CORPORATION



## BATON ROUGE COMMUNITY COLLEGE ACADIAN SITE RENOVATIONS

<b>TOTAL PROJECT FUNDING:</b>	\$8,758,901
<b>EXPENDITURES AS OF 2018:</b>	\$2,021,010.75
<b>ANTICIPATED COMPLETION:</b>	Fall 2019
<b>BUILDING SIZE:</b>	Renovations – 130,000 sq. ft.
<b>ARCHITECT:</b>	Coleman Partners Architects LLC
<b>CONTRACTOR:</b>	Guy Hopkins Construction Company

### PROJECT INFORMATION

The Acadian Site Renovations project is located at 3250 N. Acadian Thruway East, Baton Rouge, LA 70805. The renovations to the existing campus will be comprised of exterior and interior improvements, light demolition, new welding lab that will be outfitted as well as upgrading the existing welding lab and other industrial shops, and fencing, flooring, paint, system upgrades, storefront, metal panel, and signage.

### VENDORS AND CONSULTANTS

Arnold & Associates Interiors  
 Baton Rouge Community College  
 Bibliotheca  
 Breazele, Sachse, & Wilson  
 Coleman Partners Architects, LLC  
 Coleman Partners Architects, LLC  
 Contractor Furniture Group  
 Convergint Technologies  
 CSRS, Inc.  
 Forte and Tablada, Inc.  
 Guy Hopkins Construction Company, Inc.  
 Interstate Electronic Systems, LLC  
 Jones Walker  
 My Environmental Consulting  
 Transformyx, Inc

### CONTRACT AMOUNTS

\$ 2,550.00  
 \$ 52,947.33  
 \$ 1,500.00  
 \$ 14,152.75  
 \$ 387,101.58  
 \$ 3,081.35  
 \$ 30,378.24  
 \$ 59,930.49  
 \$ 861.89  
 \$ 3,850.00  
 \$ 4,908,637.00  
 \$ 360,342.99  
 \$ 5,975.09  
 \$ 2,080.00  
 \$ 306,072.80

### DESCRIPTION

Furniture, Fixtures, & Equipment  
 Relocation and Storage Reimbursement  
 Furniture, Fixtures, & Equipment  
 Owner's and Lender's Title Insurance  
 Design Fees  
 Reimbursables  
 Furniture, Fixtures, & Equipment  
 Furniture, Fixtures, & Equipment  
 Reimbursables  
 Surveying Services  
 Construction Contract  
 Furniture, Fixtures, & Equipment  
 Bond Work & Project Match Certification  
 Environmental Services  
 Furniture, Fixtures, & Equipment



## CENTRAL LOUISIANA TECHNICAL CC ALEXANDRIA CAMPUS

<b>TOTAL PROJECT FUNDING:</b>	\$21,600,000
<b>EXPENDITURES AS OF 2018:</b>	\$4,598,648.47
<b>ANTICIPATED COMPLETION:</b>	Fall 2019
<b>BUILDING SIZE:</b>	New Building / Renos– 72,000 sq. ft.
<b>ARCHITECT:</b>	BHB   ABW, A Joint Venture
<b>CONTACTOR:</b>	Ratcliff Construction Co., LLC

### PROJECT INFORMATION

The Alexandria Campus will consist of the renovation and additions to the existing McCormick Building and the new construction of a facility in Downtown Alexandria. The new development will include general education and nursing classrooms, computer and testing labs, adult education classrooms, student services, administrative departments, drafting, welding, and advanced manufacturing departments.

### VENDORS AND CONSULTANTS

Arc Abatement LTD
BHB   ABW, A Joint Venture
BHB   ABW, A Joint Venture
Breazeale, Sachse, & Wilson
*Building and Land Purchases
Central Louisiana Technical Community College
Certified Realty Valuations, LLC
CSRS, Inc.
Fine Print
Highway Materials & Signs, Inc.
Holly & Smith Architects, APAC
Jones Walker
Letterman's Blue Print & Supply
My Environmental Consulting, LLC
National Construction Rentals
Platinum Production
Ratcliff Construction Co., LLC
St. Francis Xavier Church
Visual Concepts Design

### CONTRACT AMOUNTS

### DESCRIPTION

\$	115,168.00	Demolition Services
\$	1,211,966.00	Design Services
\$	22,200.00	Reimbursement for Professional Services
\$	34,884.22	Owner's & Lender's Title Insurance
\$	1,986,541.12	Property purchased by Rapides Area Foundation for the project as part of the Act 360 Match
\$	3,496.27	Reimbursement for FF&E and Misc. Expenses
\$	2,550.00	Appraisal Services
\$	836.88	Reimbursables
\$	167.82	Printed Materials
\$	260.00	Printed Materials
\$	56,175.00	Bridging Architect
\$	3,540.30	Bond Work & Project Match Certification
\$	3,515.90	Signage
\$	20,190.00	Environmental & Demolition Consulting Services
\$	4,321.64	Security Fencing
\$	400.00	AV Equipment Rental
\$	15,958,734.99	Construction Contract
\$	100.00	Meeting Hall Rental
\$	49.00	Printed Materials





## LOUISIANA DELTA COMMUNITY COLLEGE MONROE CAMPUS

<b>TOTAL PROJECT FUNDING:</b>	\$8,200,000
<b>EXPENDITURES AS OF 2018:</b>	\$1,402,275.43
<b>ANTICIPATED COMPLETION:</b>	Fall 2019
<b>BUILDING SIZE:</b>	New Building – 22,000 sq. ft.
<b>ARCHITECT:</b>	Architecture +
<b>CONTRACTOR:</b>	Boggs and Poole Contracting Group

### PROJECT INFORMATION

The LDCC Monroe Campus is located at 7500 Millhaven Rd, Monroe, LA 71203. The project generally consists of a new addition to the Advanced Technology Center (ATC) to include an entry lobby, community auditorium, economic development offices, Louisiana Small Business Development Center (LSBDC) suite, incubation area, workforce development, testing suite, PTEC offices, lounge, copy room and associated support space.

### VENDORS AND CONSULTANTS

### CONTRACT AMOUNTS

### DESCRIPTION

VENDORS AND CONSULTANTS	CONTRACT AMOUNTS	DESCRIPTION
Architecture +	\$ 480,718.46	Design Fee
Architecture +	\$ 23,485.00	Reimbursables for Professional Services
Boggs and Poole Contracting Group Inc.	\$ 6,275,529.00	Construction Contract
Breazele, Sachse, & Wilson	\$ 14,705.75	Owner's and Lender's Title Insurance
CSRS, Inc.	\$ 20.00	Reimbursables
Jones Walker	\$ 1,987.72	Bond Work & Project Match Certification
Louisiana DETLA Community College Foundation	\$ 4,205.13	Reimbursement for FF&E and Misc. Expenses
Professional Land Surveying Company Inc.	\$ 1,600.00	Surveying Services





## LOUISIANA DELTA COMMUNITY COLLEGE TALLULAH CAMPUS

<b>TOTAL PROJECT FUNDING:</b>	\$2,500,000
<b>EXPENDITURES AS OF 2018:</b>	\$515,432.31
<b>ANTICIPATED COMPLETION:</b>	Fall 2019
<b>BUILDING SIZE:</b>	Additions / Renos – 7,600 sq. ft.
<b>ARCHITECT:</b>	TBA Studio
<b>CONTRACTOR:</b>	Don M. Barron Contractor Inc.

### PROJECT INFORMATION

The LDCC Monroe Campus is located at 132 Old Highway 65 South, Tallulah, LA 71282. The project generally consists of a new addition to front of the existing building to include RN and LPN classrooms, biology lab and CNA classroom, security office, reception and lobby area; renovations to faculty offices, restrooms, new flooring and wall paint of existing corridors; and demolition to existing Adult Ed modular building.

### VENDORS AND CONSULTANTS

### CONTRACT AMOUNTS

### DESCRIPTION

Ardaman & Associates, Inc.	\$	4,500.00	Geotechnical Services
Breazele, Sachse, & Wilson	\$	5,109.09	Owner's and Lender's Title Insurance
CSRS, Inc.	\$	72.50	Reimbursables
Denmon Engineering Company, Inc.	\$	4,382.40	Surveying Services
Don M. Barron Contractor Inc.	\$	1,956,000.00	Construction Contract
Jones Walker	\$	5,724.64	Bond Work & Project Match Certification
Louisiana DETLA Community College Foundation	\$	2,884.30	Reimbursement for FF&E and Misc. Expenses
My Environmental Consulting	\$	2,051.00	Environmental Services
Timothy M. Brandon Architect, APC	\$	179,314.13	Design Fees



## NORTHSHORE TECHNICAL COMMUNITY COLLEGE LIVINGSTON CAMPUS

<b>TOTAL PROJECT FUNDING:</b>	\$5,238,000
<b>EXPENDITURES AS OF 2018:</b>	\$882,164.86
<b>ANTICIPATED COMPLETION:</b>	Fall 2019
<b>BUILDING SIZE:</b>	New Building – 14,000 sq. ft.
<b>ARCHITECT:</b>	Holly & Smith Architects, APAC
<b>CONTRACTOR:</b>	Cangelosi Ward General Contractors

### PROJECT INFORMATION

The NTCC Livingston Campus is located at 11640 Burgess Ave., Walker, LA 70785. The new facility will include administration spaces, welding and advanced manufacturing labs, general education spaces, and a covered breezeway that connects to the Livingston Parish Literacy and Technology Center. The facility will also include a 1,000 sq. ft. tenant spaced that will be occupied the Livingston Economic Development Council (LEDC).

### VENDORS AND CONSULTANTS

### CONTRACT AMOUNTS

### DESCRIPTION

Breazele, Sachse, & Wilson	\$ 10,477.54	Owner's and Lender's Title Insurance
Cangelosi Ward General Contractors, LLC	\$ 4,215,665.00	Construction Contract
CSRS, Inc.	\$ 896.00	Reimbursables
Holly & Smith Architects	\$ 322,067.76	Design Fees
Holly & Smith Architects	\$ 15,300.00	Reimbursables for Professional Services
Jones Walker	\$ 4,078.81	Bond Work & Project Match Certification
Louisiana Community & Technical College System	\$ 1,960.00	Reimbursement for Land Abstract
Northshore Technical Community College	\$ 3,200.00	Reimbursement for FF&E and Misc. Expenses



# LCTCS ACT 360 DESIGN PROJECTS

LCTCS FACILITIES CORPORATION





**DELGADO COMMUNITY COLLEGE  
NURSING & ALLIED HEALTH CAMPUS**

<b>TOTAL PROJECT FUNDING:</b>	\$37,458,387**
<b>EXPENDITURES AS OF 2018:</b>	\$208,285.52
<b>ANTICIPATED COMPLETION:</b>	Spring 2021
<b>ANTICIPATED BUILDING SIZE:</b>	Additions / Renos – 200,000 sq. ft.
<b>ARCHITECT:</b>	Manning Architects   Mackey Mitchell
<b>CONTRACTOR:</b>	TBD

**PROJECT INFORMATION**

The DCC Nursing & Allied Health Campus is located at 1542 Tulane Ave., New Orleans, LA 70112. The renovated facility will provide lecture halls, nursing & allied health classrooms, computer and testing labs, nursing skills labs, allied health labs, simulated hospital space, administration offices, auditorium, a new food service vendor, and a Student Services Suite containing the offices for advisors, registrar and financial aid.

<b>VENDORS AND CONSULTANTS</b>	<b>CONTRACT AMOUNTS</b>	<b>DESCRIPTION</b>
Jones Walker	\$ 20,421.32	Bond Work & Project Match Certification
Manning Architects   Mackey Mitchell	\$ 2,228,800.00	Design Fees

\*\*\$3,458,387 Funding from the New Orleans Excellence Fund to be Utilized for Design Fees





## DELGADO COMMUNITY COLLEGE CULINARY & HOSPITALITY CAMPUS

<b>TOTAL PROJECT FUNDING:</b>	\$9,000,000
<b>EXPENDITURES AS OF 2018:</b>	\$3,386.94
<b>ANTICIPATED COMPLETION:</b>	Spring 2021
<b>ANTICIPATED BUILDING SIZE:</b>	Additions / Renos – 16,000 sq. ft.
<b>ARCHITECT:</b>	TBD
<b>CONTRACTOR:</b>	TBD

### PROJECT INFORMATION

The DCC Culinary & Hospitality Campus is located at 1542 Tulane Ave., New Orleans, LA 70112. The renovated facility will provide teaching classrooms, space for hospitality, teaching space with kitchen, professional kitchen, dining, café, conference room, study areas, administrative offices, general storage, dry storage, freezer, cooler and additional required support spaces for Culinary and Hospitality programs.

### VENDORS AND CONSULTANTS

Jones Walker

### CONTRACT AMOUNTS

\$ 3,386.94

### DESCRIPTION

Bond Work & Project Match Certification



**DELGADO COMMUNITY COLLEGE  
WESTBANK CAMPUS**

<b>TOTAL PROJECT FUNDING:</b>	\$12,187,998
<b>EXPENDITURES AS OF 2018:</b>	\$4,515.92
<b>ANTICIPATED COMPLETION:</b>	Spring 2021
<b>ANTICIPATED BUILDING SIZE:</b>	New Building – 25,000 sq. ft.
<b>ARCHITECT:</b>	TBD
<b>CONTRACTOR:</b>	TBD

**PROJECT INFORMATION**

The DCC Westbank Campus is located at 2440 Constellation Street, New Orleans, LA 70114 . The new facility is anticipated to contain but not limited to all academic STEM programs, labs, and faculty to serve academic and workforce programs for Algiers and the West Bank of New Orleans, specifically the healthcare, Petro-chemical, digital media, and transportation logistics industries.

**VENDORS AND CONSULTANTS**

**CONTRACT AMOUNTS**

**DESCRIPTION**

Jones Walker	\$	4,515.92	Bond Work & Project Match Certification
--------------	----	----------	---



**LOUISIANA DELTA COMMUNITY COLLEGE  
RUSTON CAMPUS**

<b>TOTAL PROJECT FUNDING:</b>	\$8,100,000
<b>EXPENDITURES AS OF 2018:</b>	\$3,104.70
<b>ANTICIPATED COMPLETION:</b>	Spring 2021
<b>ANTICIPATED BUILDING SIZE:</b>	New Building – 23,500 sq. ft.
<b>ARCHITECT:</b>	TBD
<b>CONTRACTOR:</b>	TBD

**PROJECT INFORMATION**

The LDCC Ruston Campus is anticipated to be located North of Highway 80, Ruston, LA 71270 . The new facility will provide general education space, classrooms, administrative, security, and supportive areas. There will be space provided to support welding, industrial instrumentation, patient care, and a student services suite. Landscaping, signage, parking, and loading dock shall be provided for the facility, as required.

**VENDORS AND CONSULTANTS**

Jones Walker

**CONTRACT AMOUNTS**

\$ 3,104.70

**DESCRIPTION**

Bond Work & Project Match Certification





**SOWELA TECHNICAL COMMUNITY COLLEGE  
GAMING & HOSPITALITY CAMPUS**

<b>TOTAL PROJECT FUNDING:</b>	\$9,945,743
<b>EXPENDITURES AS OF 2018:</b>	\$9,676.05
<b>ANTICIPATED COMPLETION:</b>	Spring 2021
<b>BUILDING SIZE:</b>	New Building – 28,000 sq. ft.
<b>ARCHITECT:</b>	TBD
<b>CONTRACTOR:</b>	TBD

**PROJECT INFORMATION**

The SOWELA Gaming & Hospitality Campus is anticipated to be located at 3771 Senator J. Bennett Johnston Ave., Lake Charles, LA 70615. The new facility will include classrooms, workforce flex lab for gaming, front desk/hotel rooms, baking lab, hot foods lab, meal service line and full-service kitchen, Chancellor’s dining room, storage room, cafe/pastry area, student lounge area, faculty offices, and administrative areas.

**VENDORS AND CONSULTANTS**

**CONTRACT AMOUNTS**

**DESCRIPTION**

Jones Walker

\$

9,676.05

Bond Work & Project Match Certification